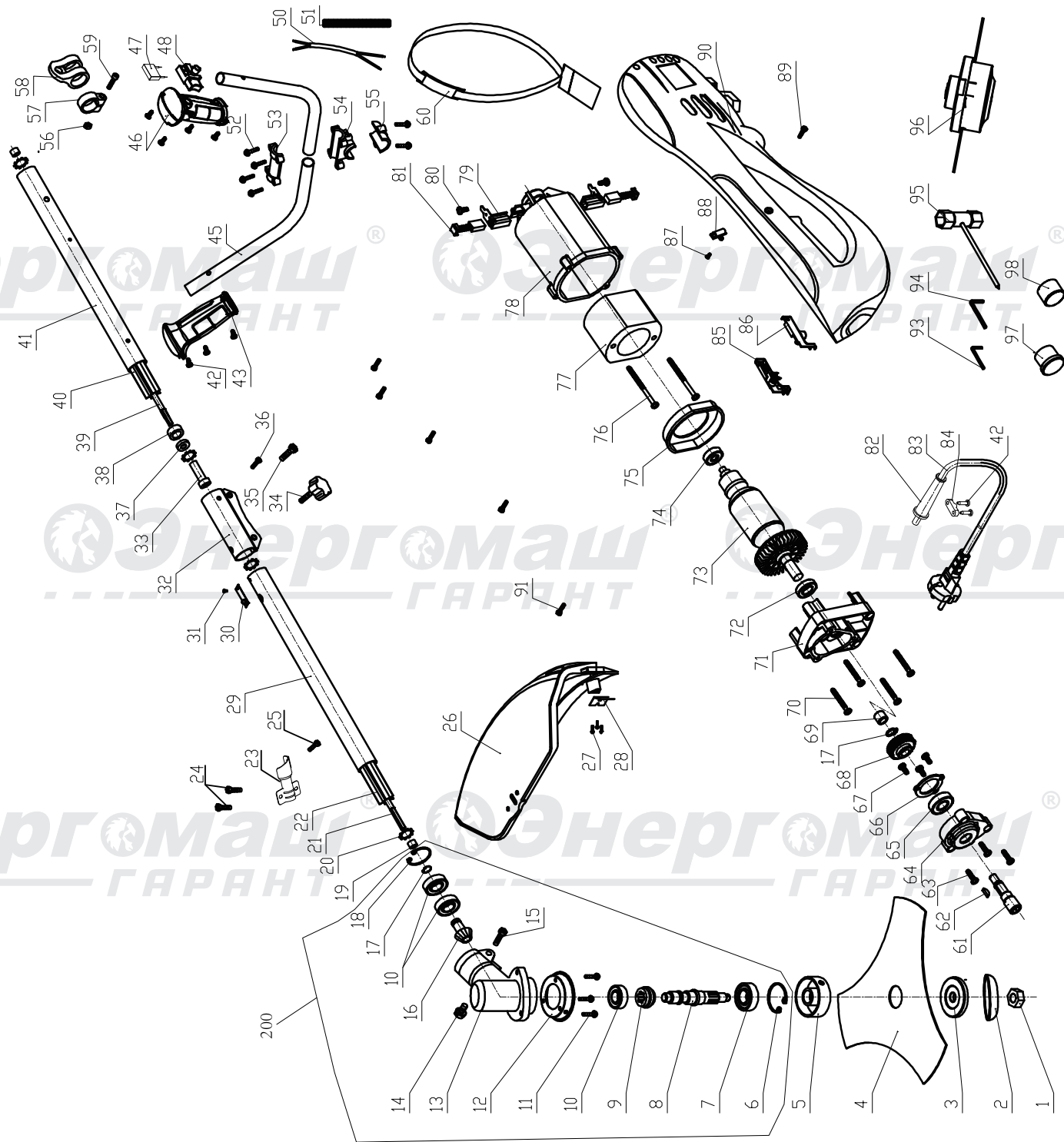


# ЭТ1-1600



# ЭТ1-1600

NO.	DESCRIPTION	NO.	DESCRIPTION	NO.	DESCRIPTION
1	left-NUT M10	34	locking knob	69	needle bearing HK0810
2	The blade cover	35	screw M6*20	70	Tapping screw ST4*35
3	down flange	36	screw M4*10	71	gear box
4	blade	37	Retaining ring	72	bearing 6901Z
5	upper flange	38	screw bush	73	rotor
6	circlip $\varnothing$ 32	39	soft shaft B	74	bearing 627Z
7	bearing 6002Z	40	plastic tube B	75	wind guide
8	spindle	41	steel tube B	76	Tapping screw ST5*60
9	big gear	42	Tapping screw ST4*14	77	stator
10	bearing 6000Z	43	handle	78	motor housing
11	screwM5*12	45	steel tube	79	carbon brush holder
12	gear box cover	46	handle	80	Tapping screw ST3*8
13	gear box	47	capacitor	81	carbon brush
14	screwM6*12	48	Switch	82	Cable protector
15	screwM5*25	50	Spring cable	83	Cable
16	pinion shaft	51	spring cable tube	84	cable anchorage
17	circlip $\varnothing$ 10	52	screw M6*25	85	right housing cap
18	circlip $\varnothing$ 26	53	steel tube press board	86	lift housing cap
19	soft shaft limit set	54	steel tube base	87	Tapping screw ST3*6
20	Retaining ring	55	steel tube base press board	88	cable clamp
21	soft shaft A	56	NUT M5	89	screw M4*12
22	plastic tube A	57	strap hook ring	90	housing
23	guard press board	58	strap hook	91	Tapping screw ST4*14
24	screwM6*20	59	screw M5*20	93	hex wrench 4mm
25	rivet $\varnothing$ 4X6	60	shoulder strap	94	hex wrench 5mm
26	guard	61	output shaft	95	wrench
27	blade	62	Woodruff key	96	spool assembly
28	Tapping screw ST4*8	63	screw ST4*16	97	Rubber plug
29	steel tube A	64	gear box cover	98	Rubber plug
30	shrapnel	65	bearing 6001Z	200	Gear box assembly
31	rivet	66	bearing cover		
32	connect tube	67	screw ST4*10		
33	soft shaft bush	68	gear		